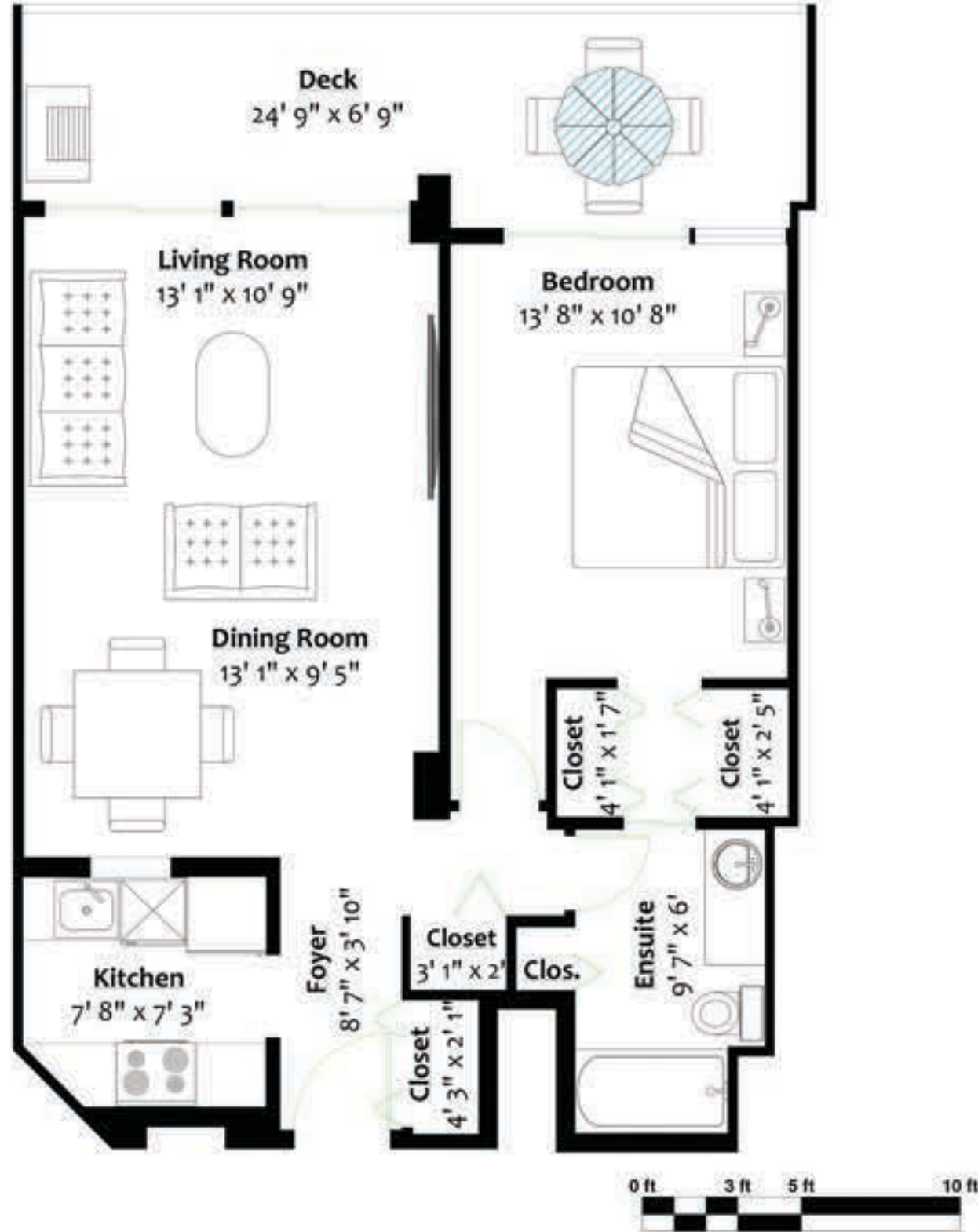


507 - 2041 BELLWOOD AVE
BURNABY, B.C.



FLOOR AREA: 704 SQ.FT.
CEILING HEIGHT: 8'
DECK: 158 SQ.FT.



** While all reasonable attempts have been made to ensure accuracy and the square footage and room dimensions are believed to be correct to ANSI Standards, due to the possibility of human error the information cannot be guaranteed. E&O Insured for \$1,000,000

WELCOME HOME



507 - 2041 BELLWOOD AVE
BURNABY, B.C.



Peter Kalicki
778.895.7990
peter@peterkalicki.com





FEATURES	
BEDROOMS	1
BATHROOMS	1
PARKING SPOTS	1
STORAGE LOCKER	1
FLOOR SPACE	704 SQFT
HEATING	BASEBOARD ELECTRIC
COOKING FUEL	ELECTRIC
FLOORING	MIXED
ZONING	CD
TAXES	\$1,185.66 (2023)
OWNERSHIP TYPE	FREEHOLD STRATA
STRATA FEE	\$374.38
BBQ'S ALLOWED	Yes!
PETS ALLOWED	Yes! (No Dogs)
ELEMENTARY SCHOOL	BRENTWOOD PARK
SECONDARY SCHOOL	ALPHA
AMENITIES NEARBY:	EVERYTHING
WALKSCORE RATING:	61
BIKESCORE RATING:	49
TRANSITSORE RATING:	65



Why rent when you can own !

Welcome to popular Anola Place by Bosa. This bright, south-facing 1-bedroom unit offers spacious living, a massive south-facing balcony & fabulous city views! Ready for your personal touches, this well-kept home features a large living/dining room, king-sized primary bedroom with dual closets & ensuite, tons of in-suite storage, plus an additional storage locker & 1 parking space.

Did someone mention amenities? Enjoy a game on the tennis court, cool off in the outdoor swimming pool, exercise in the fitness room, or just relax in the colourful gardens.
 Bonus: There is an on-site caretaker for added peace of mind.

Conveniently located close to Brentwood Mall, Skytrain, Parks, Restaurants & more, you can leave the car at home too. Make your move & call this amazing space home today.

Welcome home.

