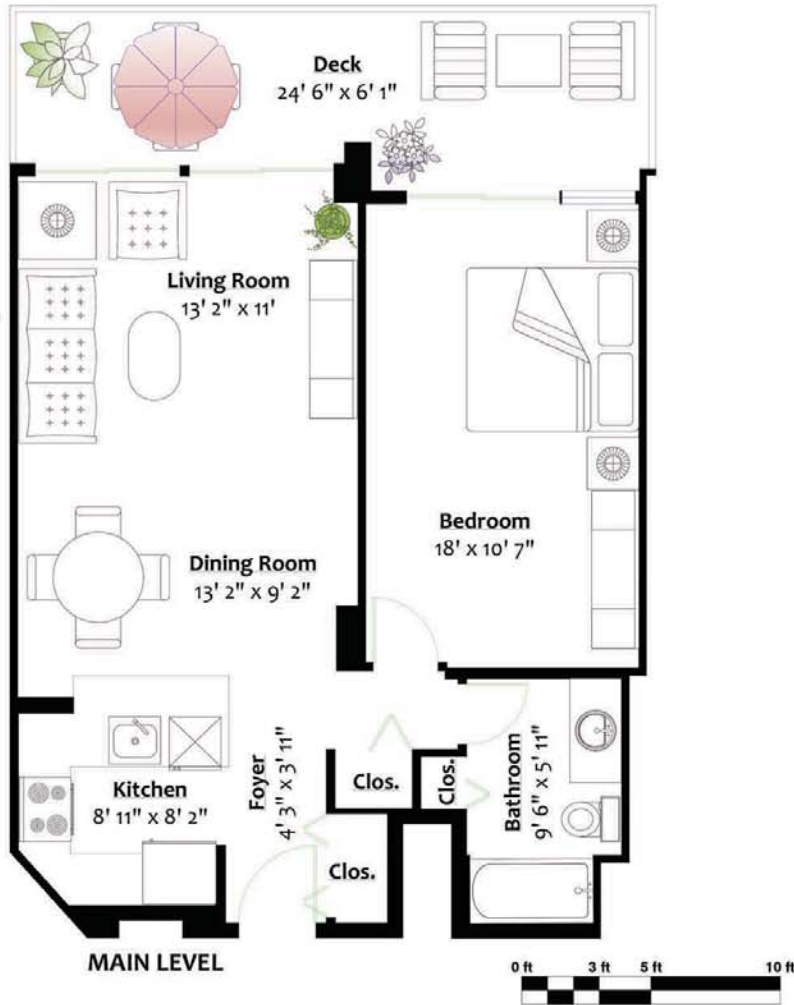


207 - 2041 BELLWOOD AVE
BURNABY, B.C.

FLOOR AREA: 705 SQ.FT.
CEILING HEIGHT: 8'
DECK: 154 Sq.FT.



** While all reasonable attempts have been made to ensure accuracy and the square footage and room dimensions are believed to be correct to ANSI Standards, due to the possibility of human error the information cannot be guaranteed. E&O Insured for \$1,000,000

WELCOME HOME



\$568,000

207 - 2041 BELLWOOD AVE
BURNABY, B.C.

Peter Kalicki
778.895.7990
peter@peterkalicki.com





FEATURES	
BEDROOMS	1
BATHROOMS	1
PARKING SPOTS	1
STORAGE LOCKER	1
FLOOR SPACE	705 SQFT
HEATING	BASEBOARD ELECTRIC
COOKING FUEL	ELECTRIC
FLOORING	ENGINEERED HARDWOOD
ZONING	CD
TAXES	\$1,055.47 (2022)
OWNERSHIP TYPE	FREEHOLD STRATA
STRATA FEE	\$348.00
BBQ'S ALLOWED	Yes!
PETS ALLOWED	Yes! (No Dogs)
ELEMENTARY SCHOOL	BRENTWOOD PARK
SECONDARY SCHOOL	ALPHA
AMENITIES NEARBY:	EVERYTHING
WALKSCORE RATING:	54
BIKESCORE RATING:	49
TRANSITSORE RATING:	65

Why rent when you can own !

Welcome to Anola Place by Bosa. Bright & spacious, this updated 1-bedroom unit offers comfortable open-concept living, a massive south-facing balcony & city views! Updated throughout with tasteful upgrades including stone counters, stainless appliances, engineered hardwood flooring & a full bathroom makeover, all that you need to do is move in.

Did someone mention amenities? Enjoy a game on the tennis court, cool off in the outdoor swimming pool, exercise in the fitness room, or just relax in the colourful gardens.

Bonus: There is an on-site caretaker for added peace of mind.

Located conveniently close to Brentwood Mall, Skytrain, Parks, Restaurants & more, you can leave the car at home too. Make your move & call this amazing space home today.

Welcome home.

